

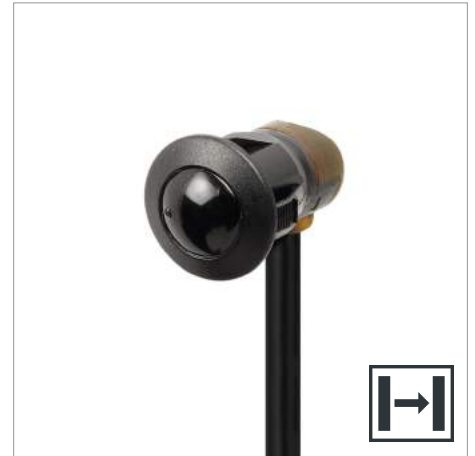
LR 101 S22 15

Remote Sensors

Remote Photoelectric Systems

Compatible Transmitter:

LT 101 S22 15



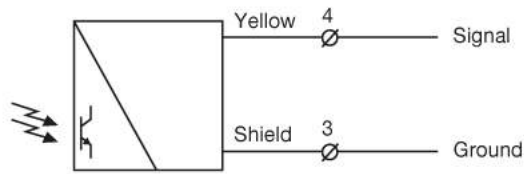
Product Data	
Function	Receiver
Connection	5 m cable
Sensing Range	Up to 11 m
Indicators	None
Optical Angle	+/- 6° (opening)
Housing Material	Plastic
Housing	Ø12,7 Snap

Technical Data	
Photo Transistor	Silicon NPN
Housing Material, Front Lens	Polycarbonate
Housing Material, Sensor Housing	ABS
Cable	2 x 0,25 mm ²
Cable Sleeve	PVC Ø 4,0 mm
Min. Cable Bending Radius	45 mm

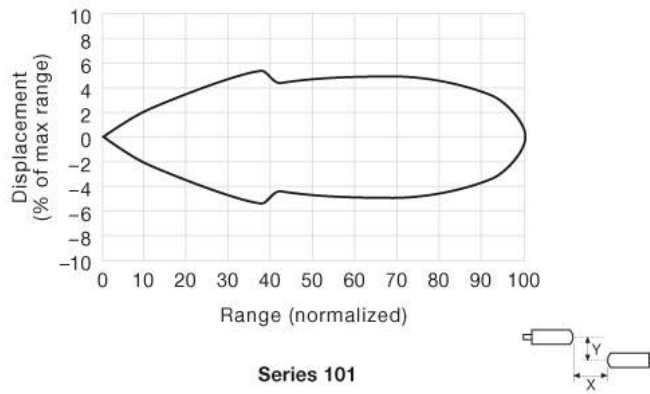
Environmental Data	
Vibration	10 – 55 Hz, 0,5 mm
Shock	30 g
Operation Temperature	- 25 to +65 °C
Storage Temperature	- 40 to +80 °C
Sealing Class	IP 67
Light Immunity 20°	> 50 000 lux

Approvals

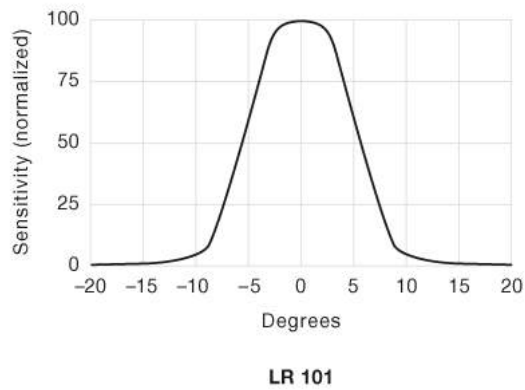
Wiring Diagram



Parallel Displacement



Angular Displacement



Dimensions

